



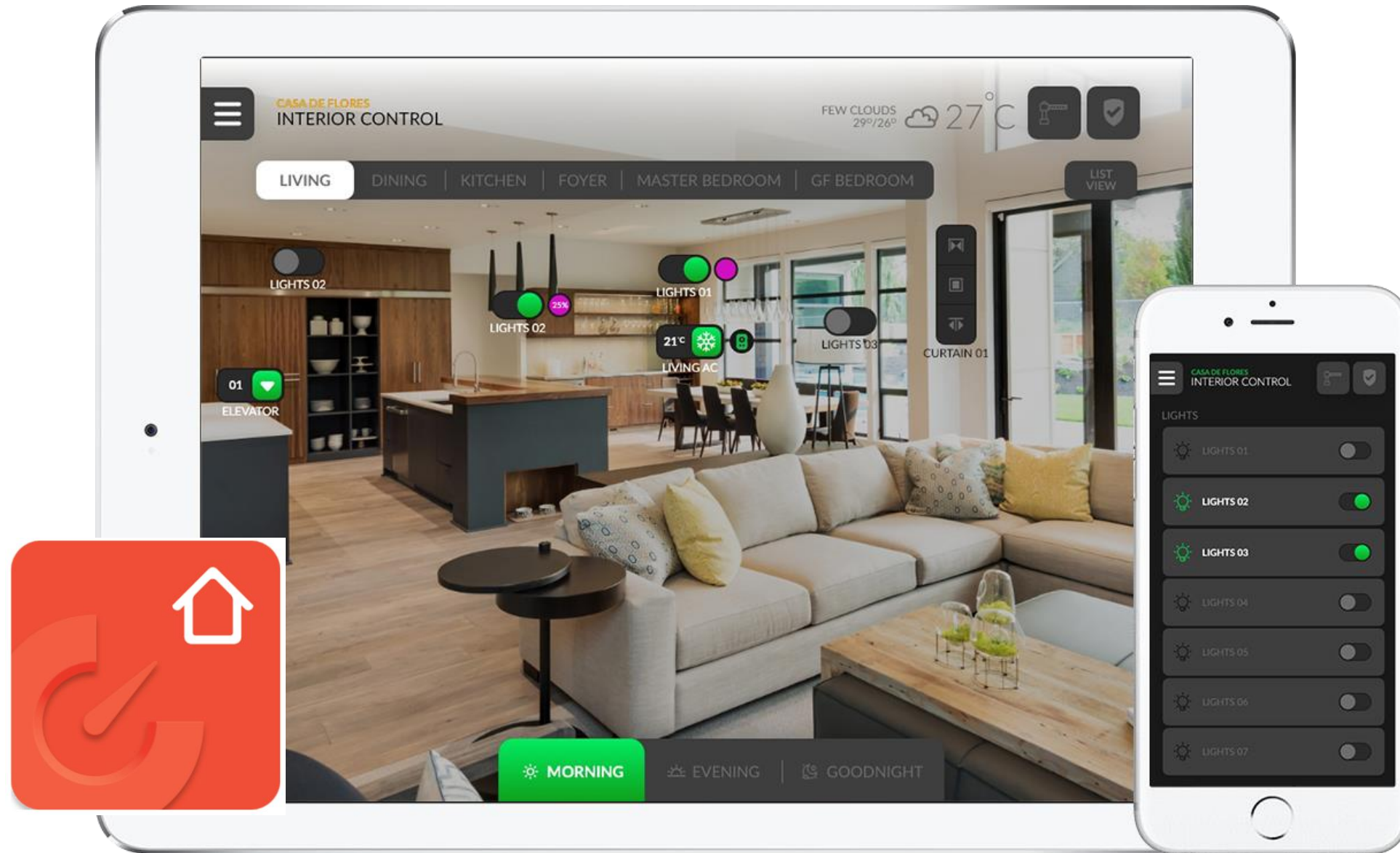
Home Automation via Smart Touch Switches - 3BHK Apartment

Smart Automation by **BuildTrack**

THE ROOMS



SMART AUTOMATION USER INTERFACES



SMART APP



SMART TOUCH SWITCHES



VOICE ASSISTANT

SMART APP/VOICE – FEATURES MOST USED



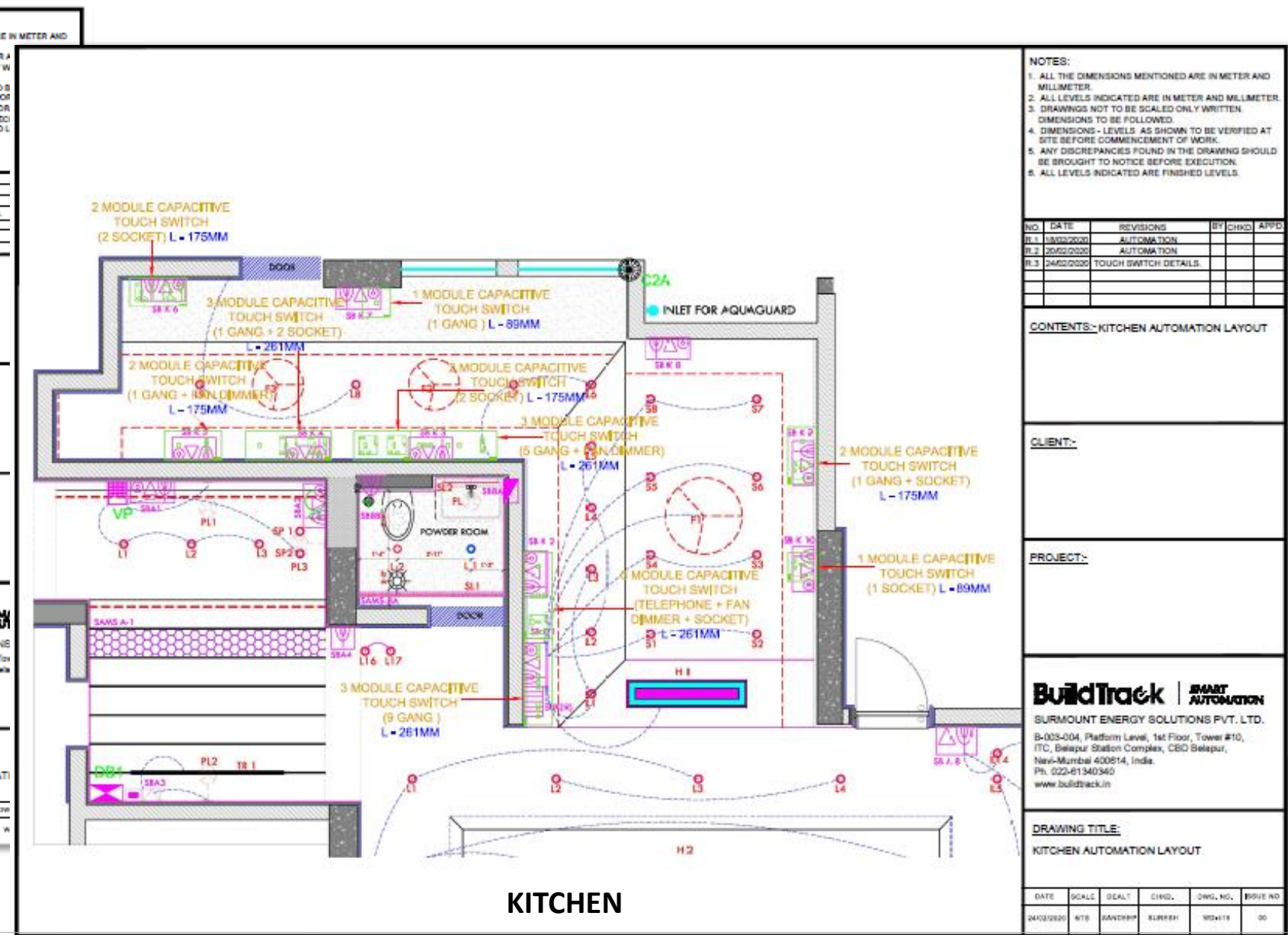
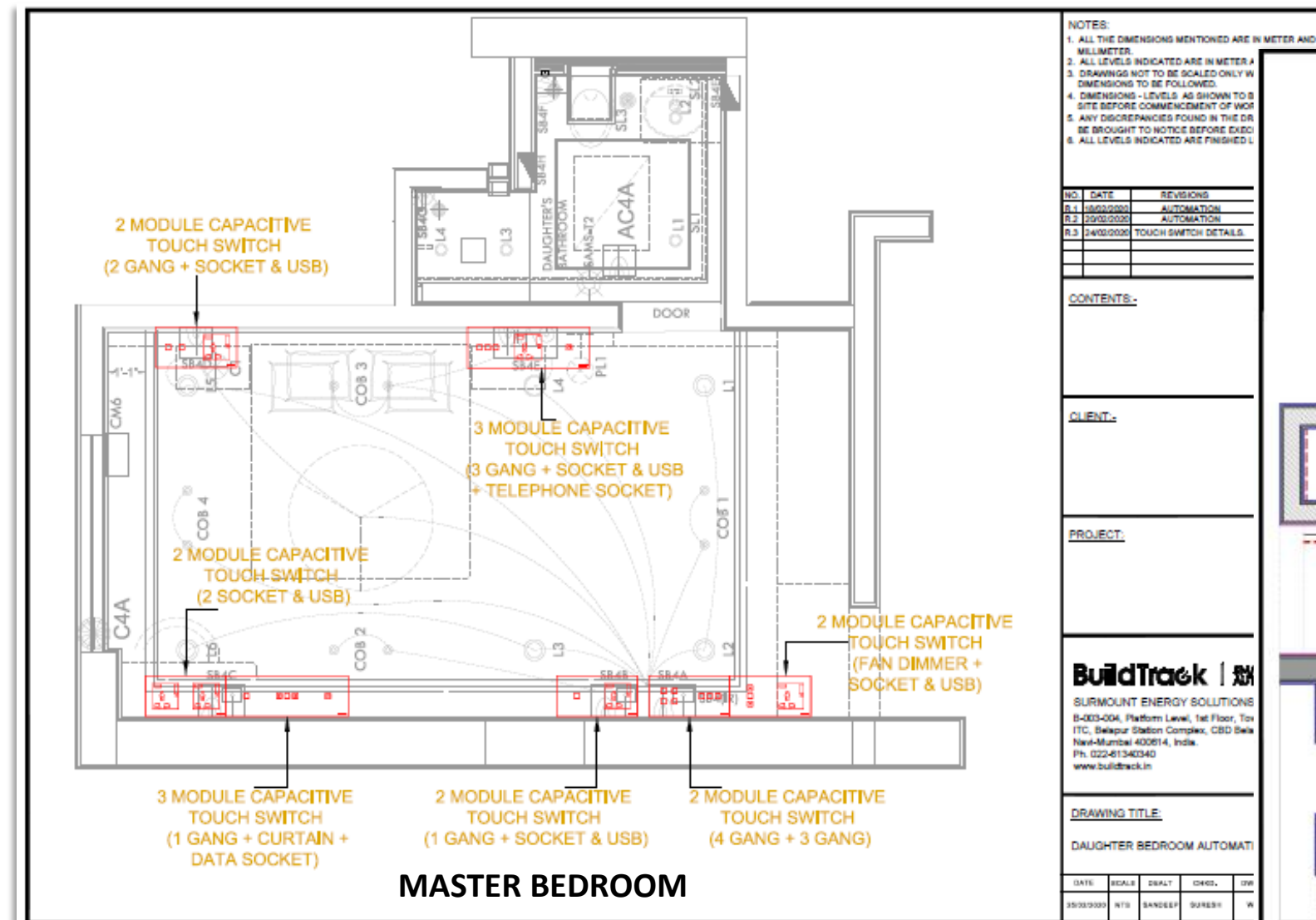
- Turning electrical devices ON/OFF – lights, fans, AC, TV, STB, Water Heater
- Dimming Lights
- Changing Fan speed or AC fan speed & temperature setting
- Changing TV Channels on STB
- Moving curtains open or closed
- Creating ‘Profiles’ that allow a combination of devices to be operated by a single button on the Smart App – like ‘All ON’, ‘All OFF’, ‘Movie Time’, ‘Good Night’
- Creating schedules for automatic operation of individual switches or complete profiles, (e.g. curtain opening in AM and closing in PM)

BUILDTRACK SYSTEM OVERVIEW

- A Wired System – uses a single loop of RS485 cable across the home
- Unlike Cat6 system, The RS485 cable is a communication cable and a power cable, and it shares the same conduit as the home electrical wiring
- RS-485 based system not only provides latency free experience, but also enables all the devices to work on DC powered, protecting devices from voltage surge and extending the life of automation devices
- 1 BuildTrack Wired Gateway manages the entire wired automation system of multiple BuildTrack Smart Touch Switches and to Sensor Nodes throughout the home
- Multiple types of sensors connect to the sensor node by twisted pair wiring or wirelessly
- The users can operate Smart Touch Switches or use the BuildTrack Smart App or Voice Assistants to operate lights, fans, TV, STB and Curtains
- BuildTrack Motion Sensors are also used in some places as standalone, to control lights in the bathrooms, i.e. they do not connect to the Gateway

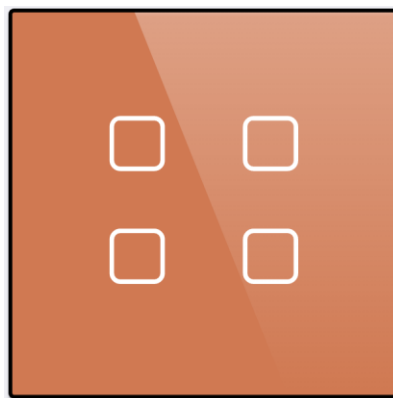
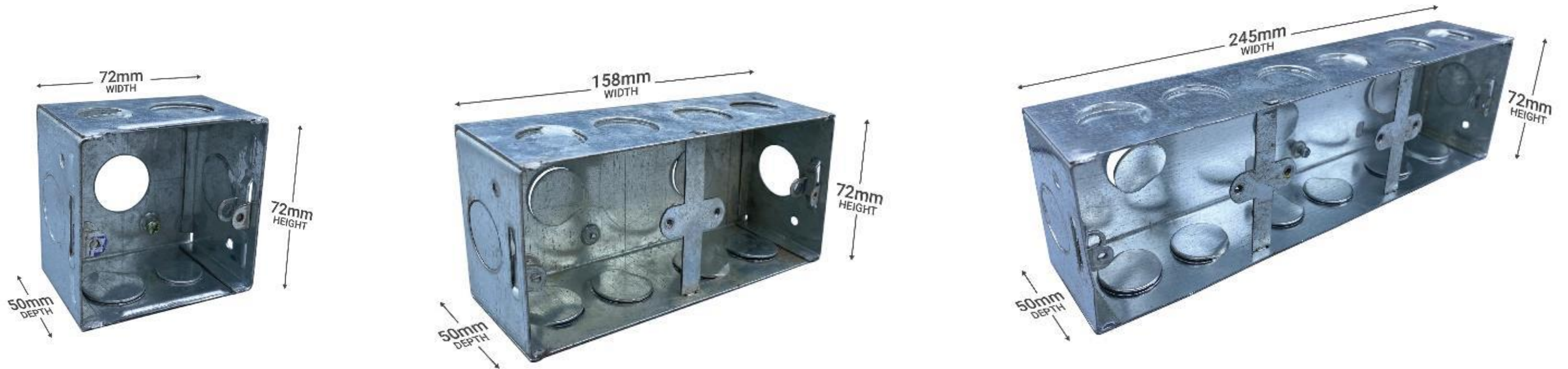
SYSTEM WIRING

- The wiring diagrams for the complete house are established in drawings at the project start
- The wiring is deployed along with the other wiring in the same conduits, reducing the cost of additional conduit and removing the wiring complexity in house
- Back boxes are provided by BuildTrack as part of the installation to match switches

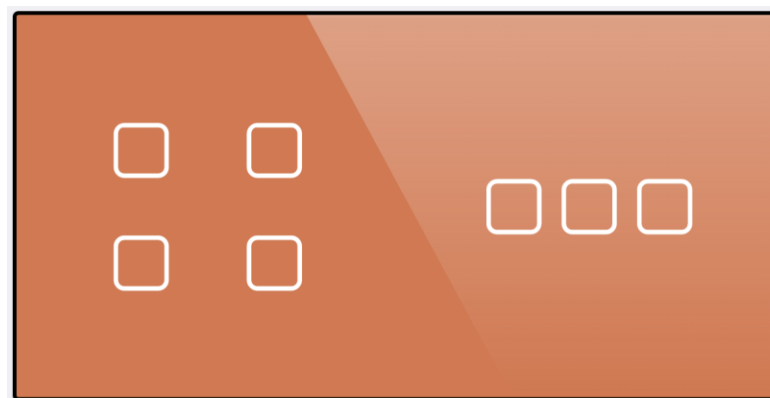


BACK BOXES

- The backbox sizes used are shown below. These are boxes that are used by BuildTrack and other brands (e.g. Schneider Clipsal)



1 Module Smart Switch Panel

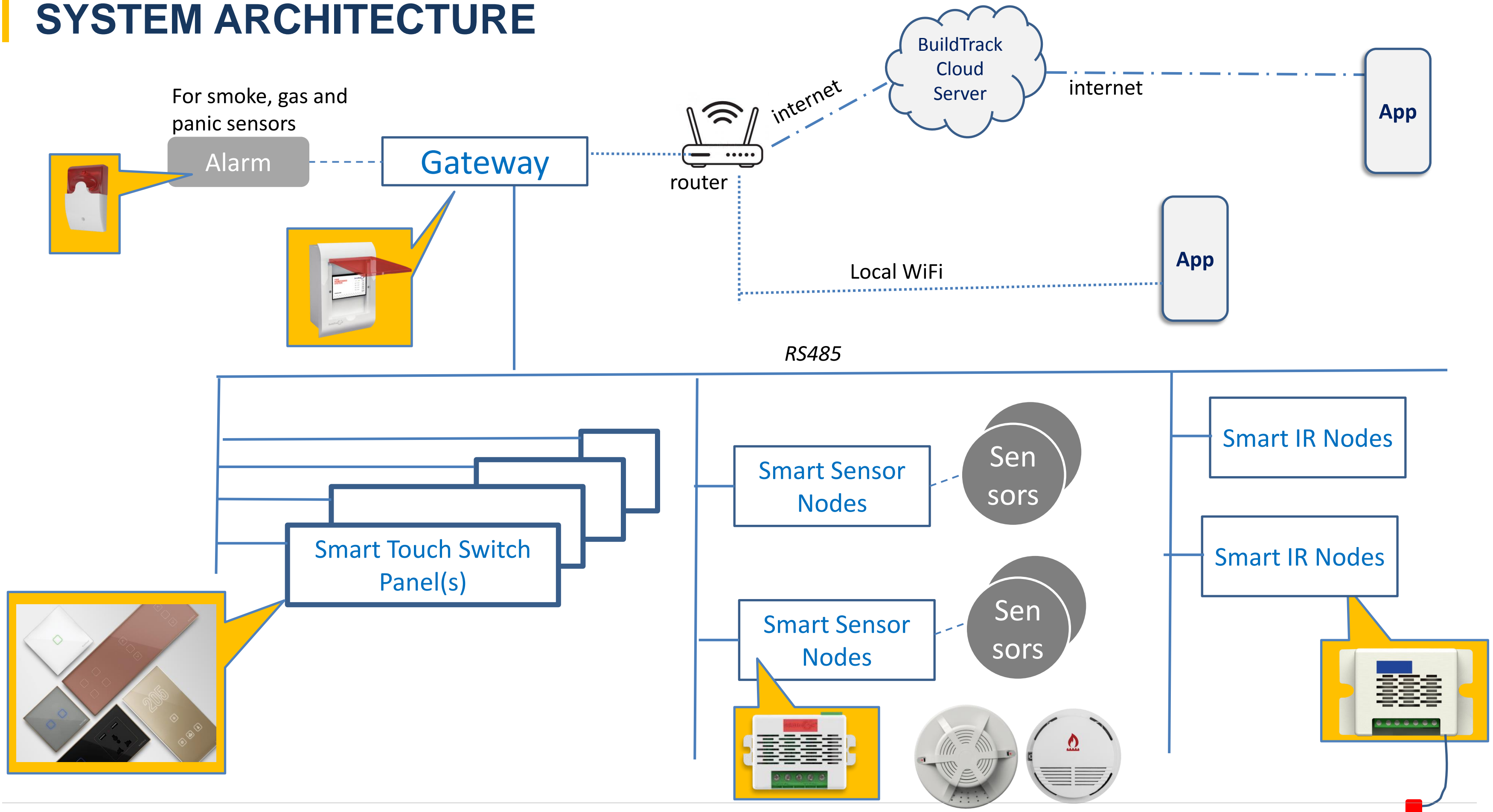


2 Module Smart Switch Panel



3 Module Smart Switch Panel

SYSTEM ARCHITECTURE



HOME AUTOMATION SYSTEM : BILL OF MATERIALS

ENTRANCE & LIVING AREA

- 1 Smart Touch Switch Panel for
 - 4 Lights (1 is a 2-way for dining area)
 - 1 Cove Light Dimmer
 - Fan w/ regulator
- 2 Panels with plug sockets & USB
 - 2 module w/ 2 sockets
 - 1 module w/ 1 socket
- 2 Curtain (sheer & dark) control panel
- 1 sensor node with 1 panic button
- For AC
 - 1 15A node (on/off)
 - 1 IR control node
- IR control for TV & STB

DINING AREA

- 1 Smart Touch Switch Panel for
 - 2 Light (1 is 2-way operable from Living area)
 - 1 Cove light Dimmer
 - 1 plug socket
- 1 Panel with plug sockets & USB (2 module)

KITCHEN

- 1 Smart Touch panel for Light Switch Exhaust Fan
 - 1 Sensor Node connected to 1 Gas Sensor, 1 Smoke Sensor

BEDROOMS (3)

- 1 Smart Touch Switch Panel for left bed
 - 1 Reading Light and 1 Light (3-way)
 - 2 Curtain (sheer & dark) control
- 1 Smart Touch Switch Panel for left bed with 1 plug socket
- 1 Smart Touch Switch Panel for right bed
 - 1 Reading Light and 1 Light (3-way)
 - 1 Fan (on/off, speed control)
 - 1 plug socket
- 1 Smart Touch Switch Panel
 - 1 Light (3-way)
- For AC
 - 1 15A node (on/off)
 - 1 IR control node
- 1 IR control node for TV & STB

BATHROOMS

- 1 Smart Node for 15 Amp water heater socket
- 1 wired motion sensor

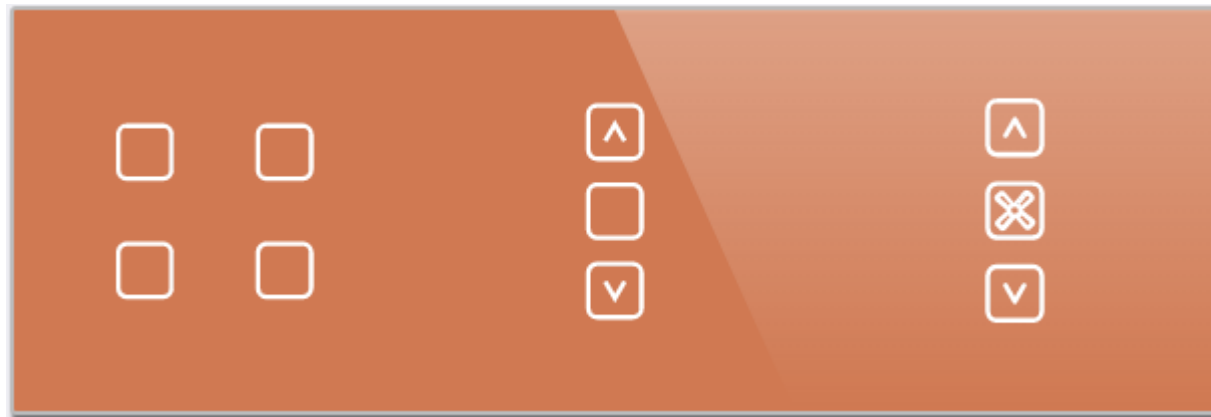
BALCONIES

- 1 Smart Touch panel for Light Switch

ENTRANCE & LIVING AREA

LIVING AREA

3 Module Smart Switch Panel



- 2 Lights for Living Rm
- 1 for Dining (2 way)
- 1 for Entrance (2way)
- 1 cove dimmer
- 1 Fan w/ speed regulator

2 Module Panel



- 2 plug sockets with USB

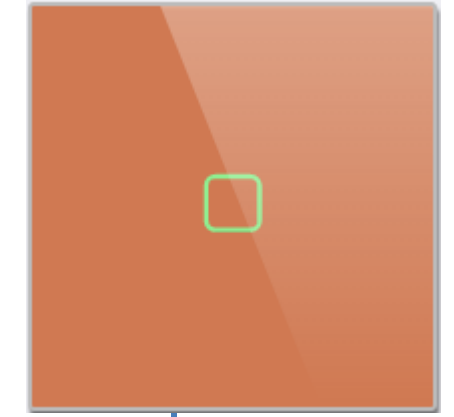
1 Module Panel



- 1 plug sockets with USB

ENTRANCE

1 Module Panel

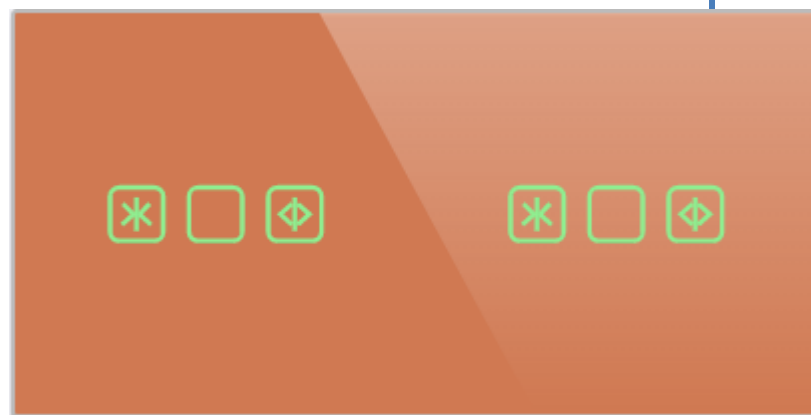


- 1 Entrance Light (2 way)

Gateway

RS485 cable

2 Module Smart Switch Panel



Sheer Curtain Control

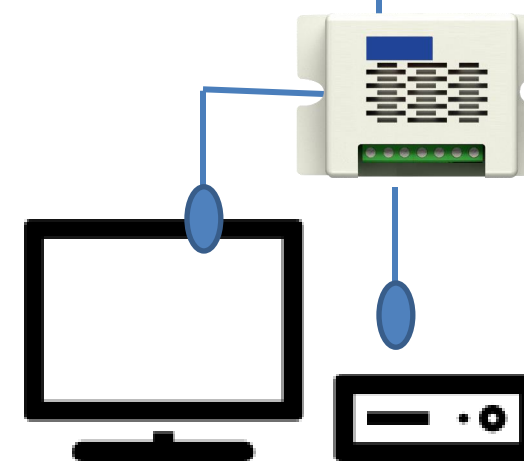
Dark Curtain Control



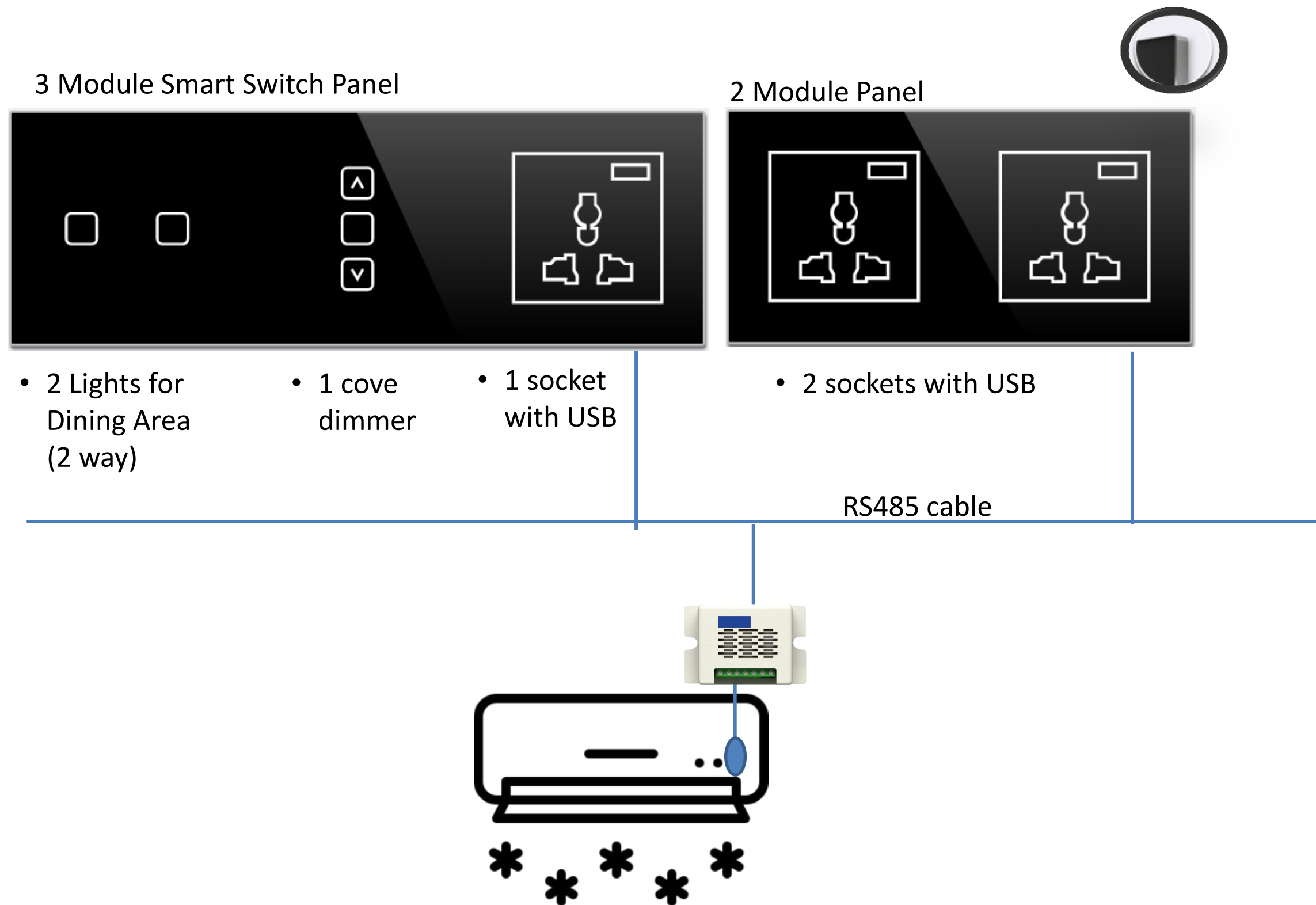
Sensor Node



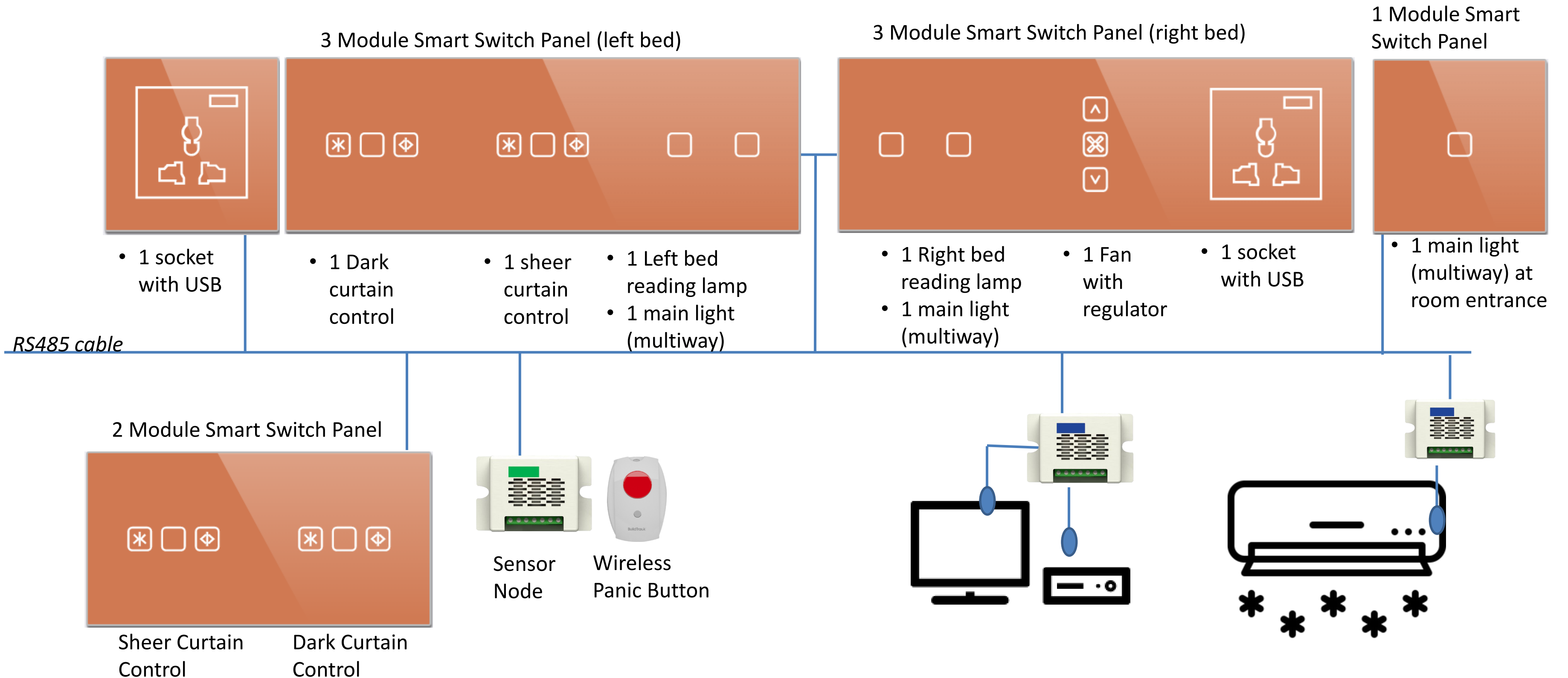
Wireless Panic Button



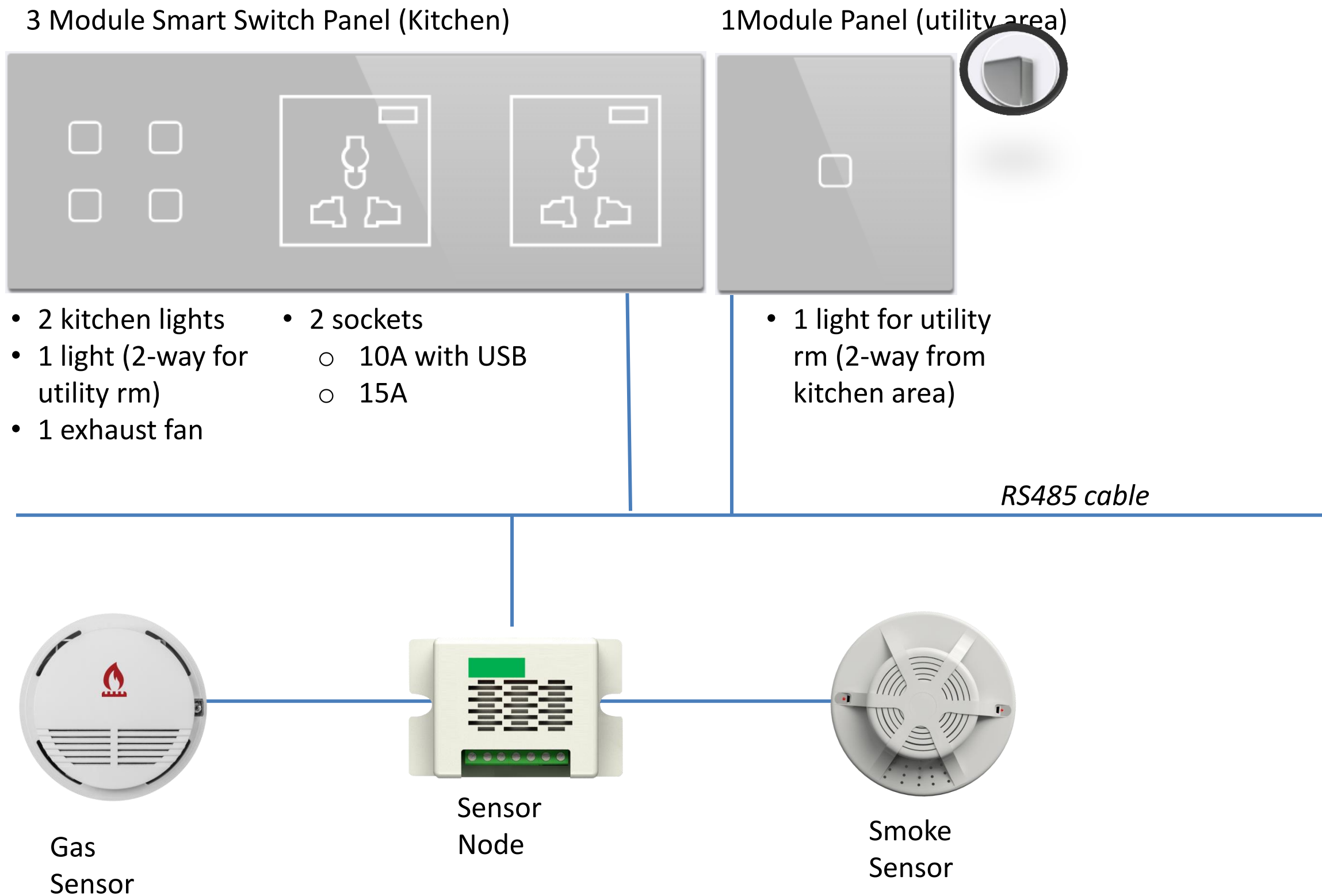
DINING AREA



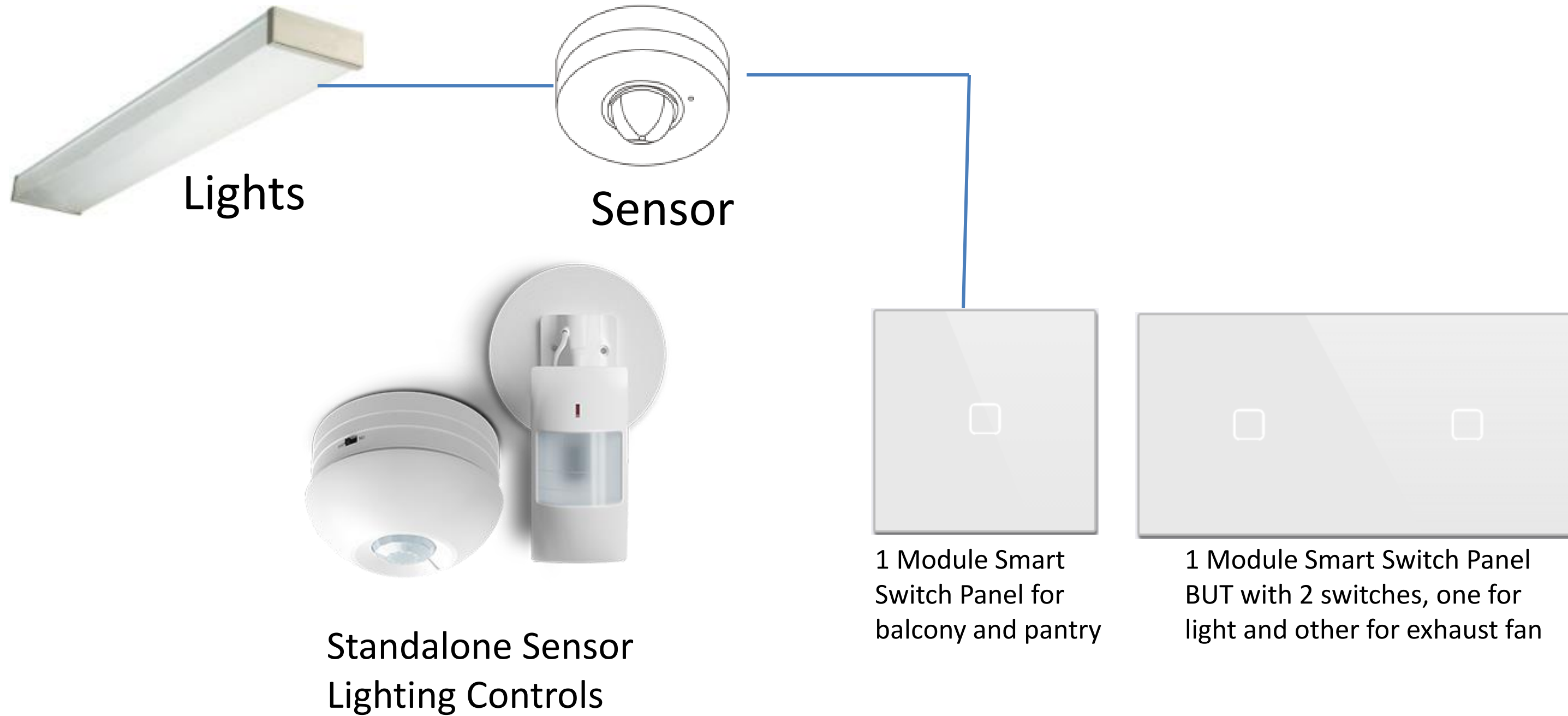
MASTER / KIDS / GUEST BEDROOMS (same format in all)



KITCHEN & UTILITY AREA



BATHROOMS



SURMOUNT ENERGY SOLUTIONS PVT. LTD.

B-003-004, Platform Level, 1st Floor,
Tower #10 ITC, Belapur Station Complex
CBD Belapur Navi Mumbai – 400614

www.buildtrack.in

We can be contacted at:

E-mail : sales@buildtrack.in

Phone : 022-61340340 / 350

Toll Free : 1800 2121 277



T H A N K Y O U



We also offer
Wireless Home Automation
for existing homes

BuildTrack[®]